



National Intercollegiate Flying Association

# SAFECON

KANSAS STATE UNIVERSITY SALINA

MAY 14-19, 2012

# OUR JETS AREN'T BUILT TO AIRLINE STANDARDS. FOR WHICH OUR CUSTOMERS THANK US DAILY.

Some manufacturers tout the merits of building business jets to airline standards.

We build to an even higher standard: our own. Consider the Citation Mustang.

Its airframe service life is rated at 37,500 cycles, exceeding that of competing airframes built to "airline standards." In fact, it's equivalent to 140 years of typical use. Excessive? No. Just one of the many ways we go beyond what's required to do what's expected of the world's leading maker of business aircraft.

CALL US TODAY. DEMO A CITATION MUSTANG TOMORROW.

1-800-4-CESSNA | CESSNA.COM



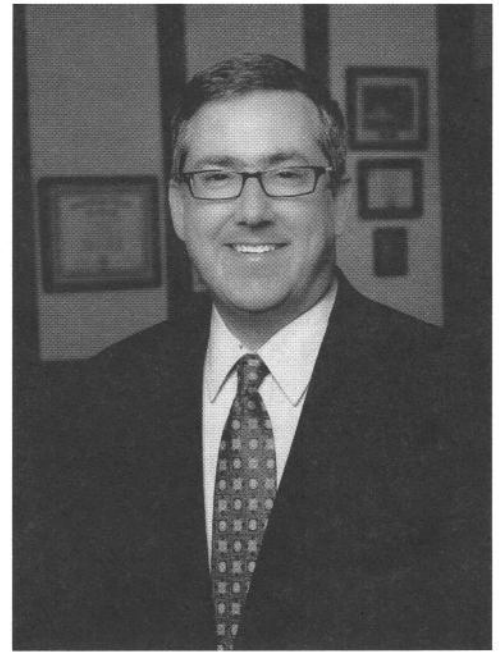
---

The Citation **MUSTANG**



# Table of Contents

WELCOME from Kansas State University President Kirk Schulz.....	4
WELCOME from K-State Salina CEO and Dean Dennis Kuhlman.....	5
WELCOME from K-State Salina Aviation Department Head Kurt Barnhart.....	6
WELCOME from NIFA Executive Director Richard Smith, III .....	7
WELCOME from SAFECON 2012 President Megan Henderson.....	8
SAFECON 2012 Officers.....	9
SAFECON 2012 Senior Judges .....	11
SCHEDULE of Events.....	12
SAFECON Awards.....	14
PAST SAFECON Champions.....	17
AD ASTRA per aspera .....	35
SAFECON 2012 Sponsors.....	37
NIFA Member Schools.....	38
 COMPETING Teams	
Averett University.....	18
Central Texas College .....	18
Delaware State University .....	19
Dowling College .....	19
Embry-Riddle Aeronautical University - Daytona Beach.....	20
Embry-Riddle Aeronautical University - Prescott .....	20
Florida Institute of Technology .....	21
Jacksonville University .....	21
Kansas State University Salina .....	22
LeTourneau University .....	22
Lewis University.....	23
Liberty University .....	23
Metropolitan State College of Denver.....	24
Minnesota State University - Mankato .....	24
Mt. San Antonio College.....	25
Ohio University .....	25
Oklahoma State University .....	26
Rocky Mountain College.....	26
San Diego Christian College .....	27
Southeastern Oklahoma State University.....	27
Southern Illinois University .....	28
The Ohio State University .....	28
United States Air Force Academy .....	29
University of Dubuque.....	29
University of Illinois.....	30
University of Nebraska - Omaha.....	30
University of North Dakota.....	31
Western Michigan University.....	31
Other Invitees .....	33



Competitors,

It is a pleasure to welcome you to Kansas State University for the National Intercollegiate Flying Association's Safety and Flight Evaluation Conference 2012.

You have worked hard and put in many hours of practice to reach this level of excellence, and you should be proud. I am certain that your institutions are as proud of you as K-State is of our flight team.

K-State has strong ties to the aviation industry, working with corporations such as Cessna, Paradigm, and FlightSafety. Richard Pearson, former president and COO of TWA and former senior vice president of American Airlines is just one of our alumni who has had a long, successful career in aviation.

K-State is proud of our aviation program and the strengths it contributes to the university's mission to be recognized nationally as a Top 50 public research university by 2025. As a land-grant university, we help to make the quality of life better for Kansas and the rest of the nation through research and extension services.

Exciting research that will have a significant impact on the future of aviation is taking place on the K-State Salina campus in the area of unmanned aircraft systems. This research will improve safety in the national airspace, but successful implementation of the results of this research will require well-qualified pilots, such as each of you.

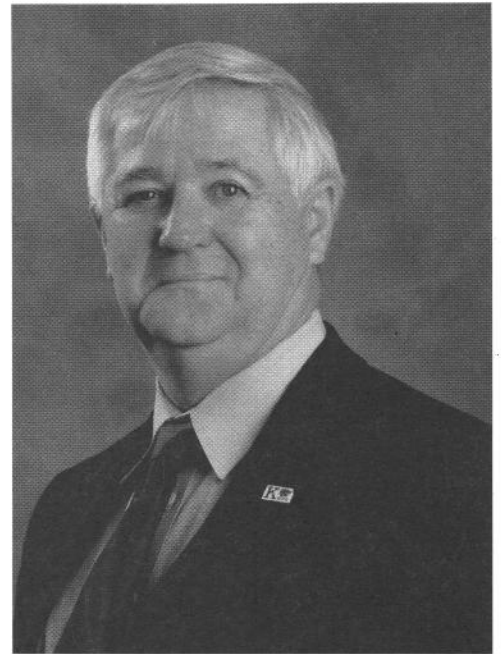
In honor of K-State alum Herbert Dimond, inventor of the snooze alarm, I encourage you to enjoy an extra nine minutes of sleep at the beginning of each day this week to ensure you are well-rested and completely focused on the spirit of this competition, safety.

Congratulations and best wishes,

A handwritten signature in cursive script that reads "Kirk A Schulz". The signature is written in dark ink on a light background.

Kirk Schulz

Kansas State University President



Participants,

It is an honor to welcome you to Salina and National SAFECON 2012. Kansas State University and the Salina Airport Authority are proud to host the “Final Four” of collegiate aviation competition.

Your eligibility for this event demonstrates that you are among the best pilots in collegiate aviation today and you are dedicated to maintaining the safety of our nation’s airspace in the future. The field of aviation is moving in a positive direction and young men and women like you will maintain aviation’s role as a fundamental part of the global economy.

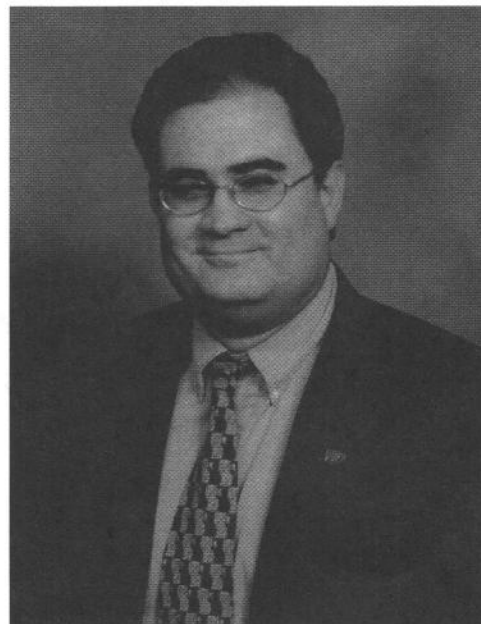
I congratulate you for the principals of academic excellence and the high standards of performance that are exemplified here, and I urge you to remain focused on these qualities as you continue your training in the classroom and in the field.

SAFECON 2012 would not have been possible without a great team effort. A small team of K-State Salina students has worked hard for a year to plan this event with help and encouragement from faculty and staff. We have many community members volunteering a helping hand this week. Your event judges have volunteered their time to make this competition a success. Thank them when you have a chance.

Congratulations again to each of you on your qualification for this year’s National SAFECON competition. Enjoy your stay in Salina and best wishes for a safe and successful competition.

A handwritten signature in cursive script that reads "Dennis K. Kuhlman".

Dennis Kuhlman  
CEO & Dean  
Kansas State University Salina



Greetings and welcome to SAFECON 2012.

We trust your time with us is enjoyable and rewarding as you participate in this year's events. Kansas has a rich aviation heritage and we are proud to host the best of collegiate aviation and the future leaders of our industry here in Salina.

As a bit of history, you may not be aware that this airport was once known as "Schilling Air Force Base" and was a strategic air and missile command base during the 1950's and 1960's. Prior to that, during WWII, it was known as Smoky Hill Army Airfield. Many B-29 crews were trained here and at other Kansas locations during the Second World War and, later, it became an important part of U.S. cold war strategy hosting squadrons of B-47's and staffing for numerous ICBM sites in, and around central Kansas. Some of the missile silos dotting the Kansas landscape have now been converted to other uses such as personal residences. Many of the ammunition storage bunkers and underground aircrew alert stations are still visible from various points on the airport.

This is Kansas State University's fourth time to host SAFECON and we believe this year will be the best yet. I want to acknowledge the hard work of our students and staff who have been planning for this event for the past year. This year's student host team is led by Megan Henderson, who has done an outstanding job coordinating the myriad details of such a large event. On the staff side Natalie Blair and Heather Wagoner have worked many long hours as well to help make this possible. Should you find you need anything during your stay here please don't hesitate to contact a member of our staff who can assist you.

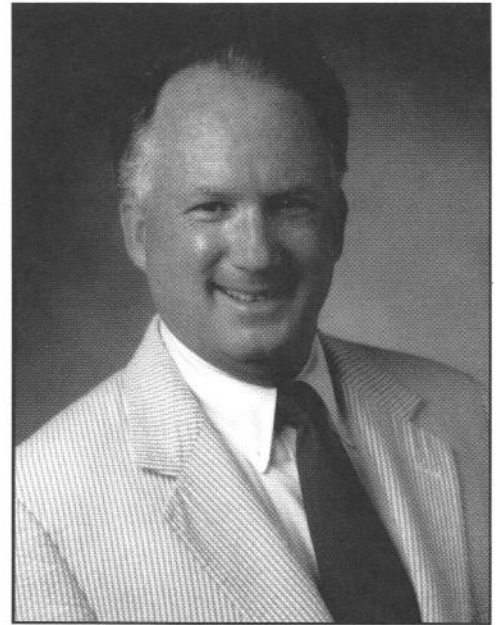
Operations will be especially busy here this week as, in addition to the normal tempo of flight operations, the airport is hosting a large-scale convective research team which will be conducting numerous flights as conditions allow, so be extra aware as you operate on, and in the vicinity of, the airport. Also, it almost goes without saying, but during this time of year, Kansas weather can change quickly for the worse so be sure to pay extra attention to the convective forecasts as well as watches and warnings.

We hope you will find a welcoming home away from home this week as you compete and wish you all the best!

Sincerely,

A handwritten signature in black ink, appearing to read "R. Kurt Barnhart". The signature is stylized and written in a cursive-like font.

R. Kurt Barnhart, Ph.D.  
Aviation Department Head  
Kansas State University Salina



May 14, 2012

Dear SAFECON 2012 Competitors:

Welcome to NIFA SAFECON 2012. I can assure you that our host, Kansas State University, has planned an extremely rewarding and safe event this week. Plus, Kansas State University's facilities are second to none. As this is my first national SAFECON as Executive Director of NIFA, I am very excited to be here with all of you!

I recently learned that a good friend of mine won the Top Pilot Award at a past SAFECON. Here's what he had to say about NIFA SAFECON events:

"I am very familiar with the NIFA organization, as I am a graduate of a NIFA school and participated in these events for my entire college career. This organization provides a unique opportunity to build exposure in the next generation of aviation professionals that are making their way into our industry."

So, I urge you all to make the "rounds" at SAFECON 2012 this week. Meet your fellow competitors; meet the NIFA judges and volunteers and meet the sponsor representatives. The relationships that you make here at SAFECON 2012 could ultimately be your aviation career's "ticket to the future!"

And, please fly safely this week!

Sincerely,

Richard G. Smith, III  
Executive Director



Dear SAFECON Participants,

Welcome, everyone, to Salina, Kan., and the 64<sup>th</sup> National Safety and Flight Evaluation Conference, hosted by Kansas State University Salina.

Congratulations for making it to Nationals! I know all of you have spent hours practicing so your team can do your best and you are very focused on the competition, but please take some time to meet new people and make friends. Someday later on in your aviation career you may meet these friends again.

I would like to personally thank all of the sponsors, judges, volunteers, the Salina Airport Authority, the Salina Control Tower, NIFA, all of the SAFECON officers and advisors, and anyone who helped make this years SAFECON event possible. Without all of their help this event would not have been possible.

I wish all of the teams the best of luck! If there are any questions please feel free to contact any of our SAFECON officers or volunteers. Hopefully the weather will cooperate and everyone will have a safe and enjoyable week here at K-State Salina.

Sincerely,

*Megan M Henderson*

Megan Henderson  
SAFECON 2012 President



# SAFECON 2012 Officers

---

## **Megan Henderson, President**

Megan is a junior from Topeka, Kan., majoring in professional pilot and technology management with minors in aviation safety and business. She is a CFI, teaching both private and instrument flight students at K-State. She is the president of the university's Women in Aviation chapter and a member of Alpha Eta Rho. She enjoys napping and sports.

## **Dash Tsao, Vice President of Competition**

Dash is a senior from Wichita, Kan., working toward a bachelor's in professional pilot with a minor in aviation safety. He competed for K-State's flight team at regional and national SAFECONs during the last two years. Currently a CFI, he is pursuing his CFII and multi-engine ratings. He wishes to eventually fly throughout Asia for a major airline or corporation.

## **Tonya Hodson, Vice President of Conference**

Tonya is a junior from Marion, Kan., majoring in professional pilot. As a young mother, she earned her pilot certificate in 1990. In 2008, she and three teammates won the Formation Competition at the National Stearman Fly In in Galesburg, Ill. She enjoys flying and spending time with her two sons who are also students at Kansas State University.

## **Luke Borst, Vice President of Finance**

Luke hails from Manhattan, Kan. He earned a bachelor's degree in agricultural education in 2009 and taught high school for one year. He is now pursuing an unmanned aircraft systems degree and is working on his private pilot license. In his spare time, Luke enjoys playing blues and country on his guitar and harmonicas.

## **Jack Henry, Director of Concessions and Volunteers**

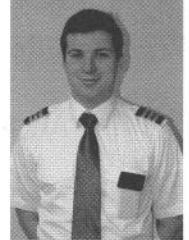
Jack is a junior from Emporia, Kan. He is a CFI for K-State and is a residence assistant in the residence halls. He is working on CFII and Multi-Engine Ratings. After finishing his degree, he hopes to earn a flight slot in the United States Military or fly for an air cargo operation. In his free time he likes to exercise, go biking, and enjoys playing airsoft and paintball.

## **Tyler Lewis, Director of Sponsorship**

Tyler is a sophomore in professional pilot and airport management from Denver, Colo. He is involved in SIFE and club basketball. He is a Student Ambassador and the SGA president-elect. He became interested in aviation when the superintendent of his high school took him for a discovery flight.

## **Jacob Thurston, Webmaster**

Jacob is a junior from Marion, Kans., majoring in computer systems technology. He enjoys web design and tinkering with the latest gadgets in the technology field and works at Dillons. One day, he would like to have his own business offering custom networking solutions to small companies.



# ETA – Comprehensive Flight Training Management RMS – Comprehensive Maintenance Management And Introducing TalonSMART- Comprehensive Safety Reporting

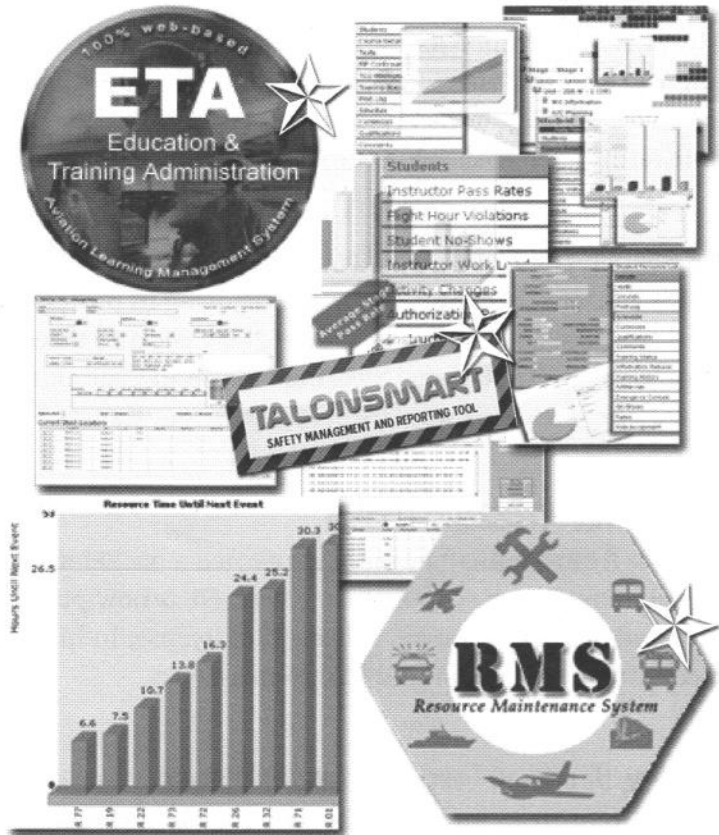
## Highlights

### ETA

- ✓ Online Integrated Scheduling
- ✓ Flight, Sim, Academic & Oral Events
- ✓ Curriculum Driven Schedules
- ✓ Student Training Management
- ✓ Automated Course Minimums Auditing
- ✓ Detailed Line Item Tracking
- ✓ Currency/Qualification Tracking
- ✓ Instructor Performance/Payroll
- ✓ Electronic Grade Book/Training Data
- ✓ Invoicing and Debit Accounts
- ✓ Resource Utilization Management

### TalonSMART

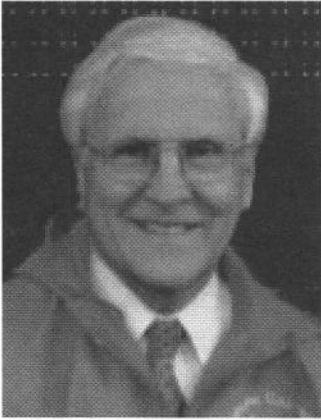
- ✓ Electronic Accident/Incident and Hazard Documentation and Reporting
- ✓ Investigation Findings./Corrective Action Documentation and Reporting
- ✓ Administer Safety Surveys and Reporting



### RMS

- ✓ Electronic Workorder Management
- ✓ Maintenance Event Tracking
- ✓ Discrepancy Tracking/Management
- ✓ Inventory Control/Management
- ✓ Integrates with ETA for Availability/Utilization

# SAFECON 2012 Senior Judges



## Darryl Stubbs, NIFA Chief Judge

Darryl Stubbs served in the U.S. Navy from 1960 - 1991 retiring as a Navy Captain after flying the F-8, F-4, A-4 and A-7 and serving in various operational and command positions. He has more than 750 carrier landings and was a Navy jet instructor for 8 years. He also commanded a Navy advanced strike training squadron, graduated from Top Gun and was named Atlantic Fighter Pilot of the Year in 1976. After his Navy career, Darryl was an Associate Professor of aviation from 1991 to 2008, a part time CFI, and NIFA team coach and advisor from 1995 to 2008. Mr. Stubbs was named NIFA Coach of the Year in 2004, has served on the NIFA Council since 2002, and was the NIFA Region X Chief Judge 2008, 2009, & 2010 Last SAFECON 2011 he was the Associate Chief Judge. He has been married to the same lovely lady for 49 years, and has three daughters and five grandchildren. He has bets on one of his grandkids learning the joy of flight!



## Spencer Hyatt, SAFECON Chief Judge

Spencer was a competitor on the Middle Tennessee State University flight team later stepping aside as team captain to serve as the SAFECON President in 2004. After earning a bachelor's degree in aerospace and master's degree in aerospace education at MTSU, he continued flight instructing before beginning his airline career. He briefly flew the Saab 340 at Chicago Express Airlines before being going to work for Skywest Airlines, where he currently is a captain on the CRJ-200/700.

Spencer has remained involved with NIFA since college as a judge, eventually serving as chief judge at regional SAFECONs and associate chief judge at the 2011 national SAFECON. When not flying or judging, Spencer can usually be found enjoying the outdoors on his road bike, skis, or hiking boots near Denver, where he currently resides.



## Nathan Schmidt, SAFECON Associate Chief Judge

Growing up in Monticello, Minn., Nathan Schmidt started his flying career at Maple Lake Airport (KMGG) at age 16. He attended Minnesota State University, Mankato 1997-2001, taking part in NIFA events from the first day on campus. He participated as a competitor and coach in three national SAFECONs and was part of MSUM's two Loening Trophy victories. Based in Minneapolis as a First Officer on the 737NG with Sun Country Airlines, Nate has worked as a flight instructor and Part 135 pilot in twin Cessnas, a Saab 340 pilot (Mesaba), an instructor on the A330 and A320 (Northwest and Delta); and pilot on the Embraer 170/175 (Compass).

Nate lives in Woodbury, Minn., with his wife, Jennifer. In his free time, he is golfing, on his boat, or catching an airplane somewhere to watch a baseball game. This is the 11th year he has volunteered with NIFA.

## Send us your photos

Send us photos of your team competing and having fun this week and see them during the awards ceremony.

[2012safecon@gmail.com](mailto:2012safecon@gmail.com)



# Schedule

---

## THURSDAY, May 10

0800-1800

Schools Arrive  
New Arrival Briefing  
Practice Signup  
Landing Practice

K-State Campus - Salina Building East 820 Room 101  
K-State Campus - Salina Building East 820 Room 101  
Runway 18/36

## FRIDAY, May 11

0800-1800

Schools Arrive  
New Arrival Briefing  
Practice Signup  
Landing Practice

K-State Campus - Salina Building East 820 Room 101  
K-State Campus - Salina Building East 820 Room 101  
Runway 18/36

## SATURDAY, 12

0800-1800

Schools Arrive  
New Arrival Briefing  
Practice Signup  
Landing Practice  
Simulator Practice

K-State Campus - Salina Building East 820 Room 101  
K-State Campus - Salina Building East 820 Room 101  
Runway 18/36  
K-State Campus - Aero Building Room 145

## SUNDAY, May 13

0800-1800

Schools Arrive  
New Arrival Briefing  
Practice Signup  
Landing Practice  
Simulator Practice  
IFR Simulator Practice  
CRM/LOFT Simulator Practice  
Preflight Aircraft on Display

K-State Campus - Salina Building East 820 Room 101  
Building 614  
Runway 18/36  
K-State Campus - Aero Building Room 145  
K-State Campus - South of Maintenance Hangar  
K-State Campus - Maintenance Hangar (Room 157)  
Hangar 703

## MONDAY, May 14

0800-0930

Contestant Briefing

First Covenant Church (2625 Magnolia Road)

1000-1130

Computer Accuracy

Eckert Hall

1200-1330

Judges School

K-State Campus - College Center Conference Room

1400-1530

Aircraft Recognition

Eckert Hall

1600-1730

SCAN

Eckert Hall

## TUESDAY, May 15

0800-1800

Navigation  
Navigation Planning and Briefing  
Ground Trainer Event  
IFR Simulated Flight Event  
CRM/LOFT Event  
CRM/LOFT Briefing Room  
CFI Event  
Safety Interviews  
Women's Achievement Interviews  
Men's Achievement Interviews  
ALPA Forum

Building 614  
K-State Campus - Salina Building East 820 Room 101  
K-State Campus - Aero Building Classroom 145  
K-State Campus - South of Maintenance Hangar  
K-State Campus - Aero Building Classroom 157  
K-State Campus - Aero Building Classroom 138  
K-State Campus - Aero Building Classroom 139  
K-State Campus - Aero Building Classroom 142  
K-State Campus - Aero Building Classroom 131  
K-State Campus - Aero Building Classroom 131  
Building 614

0800-1800

## WEDNESDAY, May 16

0800-1800	Power-Off Landing Ground Trainer Event IFR Simulated Flight Event CRM/LOFT Event CRM/LOFT Briefing Room CFI Event Safety Interviews Women's Achievement Interviews Men's Achievement Interviews Preflight Event	Runway 18/36 K-State Campus - Aero Building Classroom 145 K-State Campus - South of Maintenance Hangar K-State Campus - Aero Building Classroom 157 K-State Campus - Aero Building Classroom 138 K-State Campus - Aero Building Classroom 139 K-State Campus - Aero Building Classroom 142 K-State Campus - Aero Building Classroom 131 K-State Campus - Aero Building Classroom 131 Hangar 703
1800-2000	Ice Cream Social	Building 614 (Attendance Voluntary)

## THURSDAY, May 17

0800-1800	Short-Field Approach & Landing Ground Trainer Event IFR Simulated Flight Event CRM/LOFT Event CRM/LOFT Briefing Room CFI Event Loening Interviews Safety Interviews Women's Achievement Interviews Men's Achievement Interviews Preflight Event	Runway 18/36 K-State Campus - Aero Building Classroom 145 K-State Campus - South of Maintenance Hangar K-State Campus - Aero Building Classroom 157 K-State Campus - Aero Building Classroom 138 K-State Campus - Aero Building Classroom 139 K-State Campus - Aero Building Classroom 141 K-State Campus - Aero Building Classroom 142 K-State Campus - Aero Building Classroom 131 K-State Campus - Aero Building Classroom 131 Hangar 703
-----------	---	--

## FRIDAY, May 18

0800-1800	Message Drop Ground Trainer Event IFR Simulated Flight Event CRM/LOFT Event CRM/LOFT Briefing Room CFI Event Loening Interviews Safety Interviews Women's Achievement Interviews Men's Achievement Interviews	Runway 18/36 K-State Campus - Aero Building Classroom 145 K-State Campus - South of Maintenance Hangar K-State Campus - Aero Building Classroom 157 K-State Campus - Aero Building Classroom 138 K-State Campus - Aero Building Classroom 139 K-State Campus - Aero Building Classroom 141 K-State Campus - Aero Building Classroom 142 K-State Campus - Aero Building Classroom 131 K-State Campus - Aero Building Classroom 131
1600-1800	NIFA Council Meeting	K-State Campus - College Center Conference Room
1900-2200	Friday Night Event	K-State Campus - Student Life Center (Ticket Required)

## SATURDAY, May 19

1000-1100	Annual Business Meeting	K-State Campus - College Center Conference Room
1130-1230	Captain's Meeting	K-State Campus - Salina Building East 820 Room 101
1300-1500	NIFA Council Meeting	K-State Campus - College Center Conference Room
1700-2100	Awards Banquet	Bi-Centennial Center - Arena (Ticket Required)

# Awards

## **NATIONAL CHAMPIONSHIP TROPHY**

*The Cessna Aircraft Company*

This award is presented to the team that accumulates the most points during the National Competition.

## **LOENING TROPHY**

*Delta Air Lines, Inc*

First awarded in 1929, the Loening Trophy is presented to the team who has demonstrated outstanding competition performance, air safety, and active participation in their local aviation community during the last year. All member schools in good standing are eligible.

## **FLYING EVENTS CHAMPIONS**

*National Business Aviation Association*

The team earning the greatest number of points in the flying events will be presented this award.

## **GROUND EVENTS CHAMPIONS**

*NIFA Council*

The team earning the greatest number of points in the ground events will be presented this award.

## **COMPETITION SAFETY AWARD**

*QBE North America*

This award is presented to the team displaying the highest degree of safety during the week of competition. Teams are judged on their ability to maintain a safe environment while handling aircraft, as well as their professionalism and behavior.

## **JUDGES' TROPHY**

*Jet Aviation Holdings, Inc.*

This trophy is awarded based upon team's contestants' overall participation. Point values are assigned to each contestant placing in each event. The team with the highest number of cumulative contestant points receives this trophy.

## **TOP TWO-YEAR SCHOOL**

*Sporty's Pilot Shop*

This award is presented to the two-year school's team that accumulates the most points during the National Competition.

## **SAFETY AWARD**

*American Airlines*

A panel of judges will interview each team's safety officer to review the team's procedures and methods of promoting aviation safety. The team demonstrating the safest practices during SAFECON and the past year is presented with this award.

## **TOP SCORING CONTESTANT**

*NIFA Council*

This award will be presented to the contestant accumulating the most points in all the competitive events that count towards the National Championship Trophy.

## **OUTSTANDING TEAM MEMBER**

*American Eagle Airlines, Inc.*

Each team has the opportunity to recognize the contributions and effort of a team member by selecting him or her as their Outstanding Team Member.

## **COACH OF THE YEAR AWARD**

*Talon Systems*

This award is presented to the coach who has demonstrated the best qualities in coaching, support, and leadership. Team members nominate the coach they feel best meets this criteria.

## **TEAM SPORTSMANSHIP AWARD**

*Southwest Airlines*

This award is presented to the team displaying the best sportsmanship throughout the week of competition. Each team votes on the recipient.

## **HAROLD S. WOOD AWARD FOR EXCELLENCE**

*General Aviation Manufactures Association*

An award is presented to the student who has demonstrated outstanding performance in academics and service to his or her aviation program, institution, and community.

## **NATIONAL & REGIONAL TOP PILOT AWARDS**

*Air Line Pilots Association*

The contestant that is chosen as the National Top Pilot at SAFECON, along with the Regional Top Pilots from each region, are recognized and presented with these awards.

## **NAVIGATION EVENT**

*Jeppesen*

The Navigation Event consists of a cross country flight over a three to five leg course between 70 and 120 nautical miles in total length. Each contestant submits a flight plan before takeoff, estimating time en route for each leg, total elapsed time, and fuel consumption. The contestant with the fewest penalty points wins.

## **SHORT FIELD LANDING EVENT**

*Cirrus Aircraft*

The objective of the Short Field Landing Event is to test the pilot's skill at maneuvering and manipulating the aircraft. The objective is to land on the target line after flying a normal traffic pattern. Once the pilot reduces the power, he or she cannot increase it. The pilot's score is the distance in feet between where the aircraft's wheels initially touch the runway and the target line. The lowest cumulative score from the two landings plus technique penalty points wins.

## **POWER-OFF LANDING EVENT**

*Airbus Industries*

Similar to the Short Field Event, the power must be reduced and remain at idle on the downwind leg abeam the target line. The approach is made by gliding for the remainder of the traffic pattern to touch down on the target line.

## **MESSAGE DROP EVENT**

*Phoenix Aviation Managers*

The objective of the Message Drop Event is to hit a target on the ground with a message container dropped from an aircraft at two hundred feet. A team effort by both the pilot and the dropmaster is necessary to maneuver the aircraft to the container will hit the target. The contestant with the lowest total distance from the two targets is the winner.

## **GROUND TRAINER EVENT**

*Frasca International, Inc.*

This event is designed to test the competency and skill of the contestants' ability to fly under instrument flight rules (IFR) in a flight training device. Flying a predetermined pattern, the competitor must show proficiency in maintaining altitude, heading, and airspeed.

## **IFR SIMULATOR EVENT**

*Frasca International, Inc.*

Competitors are required to demonstrate instrument flight rules (IFR) proficiency and precision by flying a given route in a flight training device. All aspects of a cross-country IFR flight are included such as clearances, holding patterns, instrument approach procedures, and diversion to an alternate airport.

## **SIMULATED COMPREHENSIVE AIRCRAFT NAVIGATION EVENT (SCAN)**

*National Association of Flight Instructors*

The Simulated Comprehensive Aircraft Navigation Event is a written exam with problems that reference a simulated cross-country flight over a given route. Flight planning includes questions on weight and balance, aircraft performance, Federal Aviation Regulations, aeronautical charts, weather interpretation, and fuel consumption.

## **AIRCRAFT RECOGNITION EVENT**

*NIFA Council*

Photos of aircraft are shown on a screen for three seconds each. Competitors have 15 seconds to identify each aircraft's manufacturer, model number, and common name, if any.

## **COMPUTER ACCURACY EVENT**

*Aviation Supplies & Academics*

Contestants work against the clock to solve mathematical flight planning computations using a manually operated flight computer (E6-B). The exam includes problems on time, speed, distance, wind corrections, fuel requirements, and conversion factors.

## **CREW RESOURCE MANAGEMENT/ LINE ORIENTED FLIGHT TRAINING EVENT**

*SkyWest Airlines*

Two person crews, a pilot flying and a pilot not flying, are assigned a cross-country flight in a flight training device. Contestants are judged on their ability to work together in a cockpit environment, as well as their ability to handle in-flight situations.

## **CERTIFIED FLIGHT INSTRUCTOR EVENT**

*Aircraft Owners and Pilots Association*

Certified Flight Instructors take part in a teaching competition. The event starts with a CFI preparing a lesson on a predetermined subject and teaching it. If weather and time permit, the CFI teaches the lesson in flight.

## **PREFLIGHT INSPECTION EVENT**

*Hemphill, Weesner, and Viner Families*

An aircraft is 'bugged' with at least thirty unairworthy discrepancies. Contestants are given 15 minutes to preflight the aircraft and find as many discrepancies as possible.

## **MEN'S ACHIEVEMENT AWARD**

*Aviation Supplies & Academics*

Male competitors are interviewed by a board that examines their academic achievements, community service, and aviation involvement.

## **WOMEN'S ACHIEVEMENT AWARD**

*The Ninety-Nines, Inc. International*

Female competitors are interviewed by a board that examines their academic accomplishments, community service, and aviation involvement.

## **COLLEGIATE AVIATION PROGRESS AWARD**

*NIFA Council*

This award recognizes the team that has made the greatest improvements in the last year. A judging committee evaluates each team, taking into account the team's performance, safety, membership, aircraft operations, and extracurricular activities.

# Anytime. Anywhere. Anyway.



Try our  
**FREE**  
app!\*

Print, online or mobile, 24/7, Trade-A-Plane is here with everything that keeps you flying—now and in the future.

As a SAFECON attendee, you can enjoy a FREE preview of our premium web features for subscribers only!

Through **June 2**, just go to Trade-A-Plane.com and log in with **SAFECON2012** as both the Username and Password.

\*For iPhone and Android

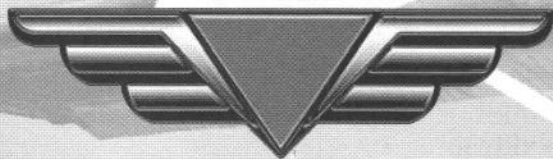
Trade-A-Plane.com • 800.337.5263

## Trade-A-Plane®

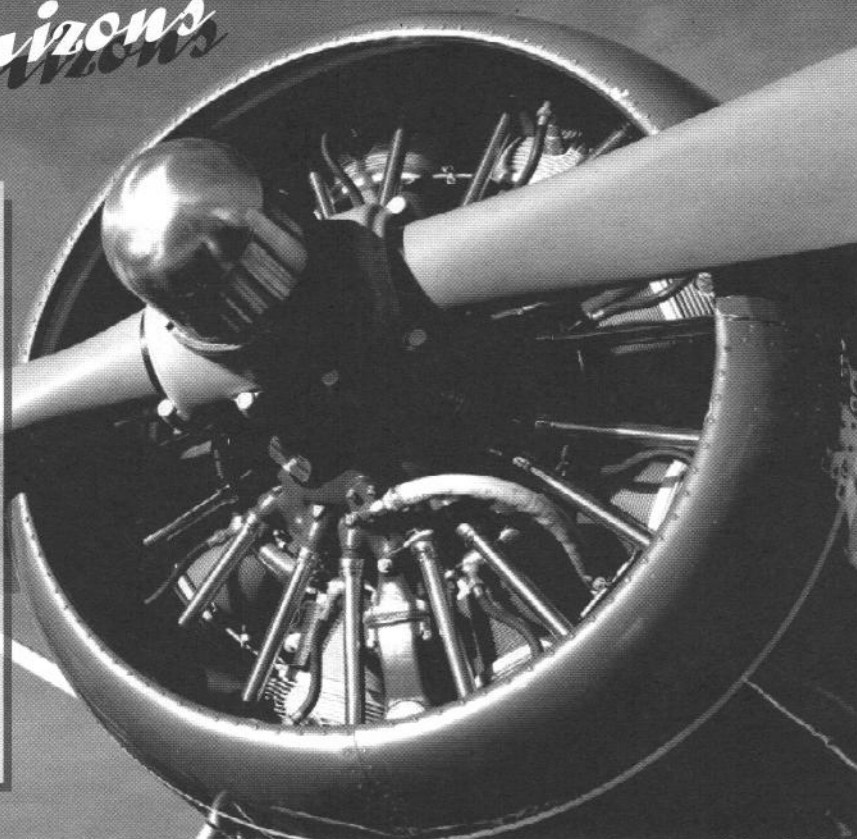
*Propel yourself*  
*to NEW horizons*

Supporting the entire LGBT aviation community and encouraging aspiring aviators with scholarships for the development of their careers.

### NGPA



National Gay Pilots Association  
[www.ngpa.org](http://www.ngpa.org)





# Past SAFECON Champions

YEAR	HOST SCHOOL	LOENING TROPHY	NATIONAL CHAMPION
1949	Texas Christian University	~	~
1950	Stephens College	~	~
1951	University of Oklahoma	~	~
1952	Oklahoma State University	Macalester College	~
1953	University of Minnesota	Texas Christian University	~
1954	University of Illinois	University of Illinois	~
1955	Texas Christian College	Oklahoma A&M	~
1956	University of Oklahoma	Oklahoma A&M	~
1957	Oklahoma State University	Oklahoma A&M	~
1958	Macalester College	Oklahoma State University	~
1959	University of Illinois	Oklahoma State University	~
1960	The Ohio State University	Oklahoma State University	~
1961	Texas A&M	St. Cloud State University	~
1962	Oklahoma State University	Oklahoma State University	~
1963	Southern Illinois University	Ohio University	~
1964	Montana State University	Oklahoma State University	~
1965	Purdue University	Oklahoma State University	~
1966	University of Colorado	Ohio University	San Jose State University
1967	Southern Illinois University	Oklahoma State University	Parks College
1968	Ohio University	Parks College of St. Louis	San Jose State University
1969	Parks College of St. Louis	San Jose State University	San Jose State University
1970	Montana State University	San Jose State University	Iowa State University
1971	San Jose State University	San Jose State University	Oklahoma State University
1972	Purdue University	Oklahoma State University	~
1973	Southern Illinois University	Broward Community College	~
1974	St. Cloud State University	Southern Illinois University	~
1975	University of Albuquerque	Oklahoma State University	~
1976	Embry Riddle Aero. University - Daytona	Oklahoma State University	~
1977	Oklahoma State University	Southern Illinois University	~
1978	Middle Tennessee State University	Southern Illinois University	~
1979	Northeast Louisiana University	Oklahoma State University	~
1980	University of North Dakota	Oklahoma State University	~
1981	Northeast Louisiana	University of Illinois	Southern Illinois University
1982	Palomar Community College	Oklahoma State University	Southern Illinois University
1983	Western Michigan University	Western Michigan University	Western Michigan University
1984	United States Air Force Academy	Oklahoma State University	Southern Illinois University
1985	The Ohio State University	Oklahoma State University	University of North Dakota
1986	Texas State Technical College	Oklahoma State University	University of North Dakota
1987	Southern Illinois University	Mt San Antonio College	University of North Dakota
1988	Northeast Louisiana University	The Ohio State University	University of North Dakota
1989	University of North Dakota	Embry Riddle Aero. University - Prescott	University of North Dakota
1990	University of Illinois	Oklahoma State University	University of North Dakota
1991	Nicholls State University	Embry Riddle Aero. University - Prescott	University of North Dakota
1992	Northeast Louisiana University	Oklahoma State University	Embry Riddle Aero. University - Daytona
1993	Central Texas University	Central Texas College	Embry Riddle Aero. University - Prescott
1994	Parks College of St. Louis	Parks College of St. Louis	University of North Dakota
1995	Delta State University	Central Texas College	University of North Dakota
1996	Embry Riddle Aero. University - Daytona	Central Texas College	University of North Dakota
1997	Western Michigan University	Ohio University	Embry Riddle Aero. University - Prescott
1998	Kansas State University Salina	Central Texas College	Western Michigan University
1999	Kansas State University Salina	Minnesota State University - Mankato	Embry Riddle Aero. University - Prescott
2000	Delta State University	Ohio University	University of North Dakota
2001	University of North Dakota	Minnesota State University - Mankato	University of North Dakota
2002	The Ohio State University	United State Air Force Academy	Western Michigan University
2003	University of North Dakota	Purdue University	Embry Riddle Aero. University - Prescott
2004	Middle Tennessee State University	United States Naval Academy	University of North Dakota
2005	Kansas State University Salina	Mt. San Antonio College	Embry Riddle Aero. University - Prescott
2006	The Ohio State University	Purdue University	University of North Dakota
2007	The Ohio State University	Westminster College	Embry Riddle Aero. University - Prescott
2008	Middle Tennessee State University	Jacksonville University	Embry Riddle Aero. University - Prescott
2009	Parks College of St. Louis	LeTourneau University	University of North Dakota
2010	Indiana State	Kent State University	University of North Dakota
2011	The Ohio State University	Southern Illinois University	Southern Illinois University
2012	Kansas State University Salina		

# Averett University



## Central Texas College

Back Row (l-r): Robert Mazyrack, Jon Strobel, Maximilian Wiener, Mason Ross, Austin Boney. Front Row: Killian Brooks, Bryan Glover, Michael Steele.



# Delaware State University

Pictured (l-r): Hans Reigle (advisor), Kenneth Ritchie, Isaac Shellenberger, Nicole Otto, Lauren Herfindahl, William Jester (co-captain), Willie Gonzalez (captain), John Sherman (advisor)



# Dowling College



# Embry Riddle Aeronautical University – Daytona Beach

Back Row (l-r): Matt Hirlehey, Abhishek David, Michael Kelly (captain), Daniel Urbanski, Alexander Bishop, Caesar Yuen, John Christian, Ben Eve, Travis Bellows, Sebastian Chruszcz, Kevin Porter. Middle Row: Ken Byrnes, Vivek Jadav, Soran Barzanje, Ryan Lee-ward, Paul Kim, Kate Zhu, Nicole Leong, Amanda Sorensen, Phil Rademacher, Samantha Judd, Annie Smith, Tim Brady, Benjamin Ingraham. Front Row: Les West- brooks (head coach), Mat- thew Kehr, James Blackham, Sharad David, Hrvoju Bulic, Luke Buckett, Peter Weber, Jamsheed Lovelace, Derek Herchko (assistant head coach). Not pictured: Luis Terrazas Torres



# Embry Riddle Aeronautical University – Prescott

Back Row (l-r): Ryland Sarver, Christian Mullen, Alex Tamsing (captain), Chris Dolly (assistant coach), Aleksij Kraljic, Thomas Galloway, Klyte Mills, Michael Dolezal, Richard Clinton, Dylan Perreira, Alex Tien, Corey Davis, Thomas An, Richardo Colon, Andrew Voss, Peter Grey (head coach). Middle Row: Thad Short (assistant coach), Zach Sargent, Nicholas Clyde, Sean Bresnan, Joshua Heth, Alex Johnson, Caleb Seek, Allison Read, Christine Hopkins, Mashaan Kaula, Mitchell Boehle. Front Row: Andrew Nelson, Kyle Thannisch, William Jacobson, Brendan Vinchesi, John Guidotti.



# Florida Institute of Technology



Back row (l-r): Nick Blouin, Brian Ruh, Ryan Warner, Matt McGill, Chris Sailer, Ben Remy, Jack McCormack. Front Row: Donna Wilt (advisor), Victoria Dunbar (advisor), Anthony Ferendo, Francine Kelly, Tim Moriarty, Emily Siggins, Connor Shea, Brandon Bourne, Austin Catherman, Lucas Worthen, Brendan Newcott.

# Jacksonville University

Pictured (l-r): Jeff Harrison (coach), Joseph Schmidt, Denis Ndrejoni, Chris Clarkson, Kevin Barth, Mike Karona, Valentin Romero, Katja Jordan, Matt Waldon, Maria Figuirado, Daniel Pruitt, Joseph Buttacavoli, William Aultman, Bill Luce, Derek Willis, Rhett Yates (coach).



# Kansas State University Salina

Back Row (l-r): Jim Schlup, Trevor Henson, Joe Englert, Tanner Dirks, Michael Potts, Bert Hutchinson, Tom Karcz (advisor). Front Row: Ryan Enebo (captain), Colton Daum (coach), Jim Hoffman, Brycen Scholz, Kyle Simpson.



# LeTourneau University

Pictured (l-r): Andrew Robinson, Caleb Waite, Ken Misiak, Brandon McCann, Michael Felts, Patrick Harney, Jered Gebel, Steve Hederstedt, Whitney Brouwer, Daniel Johnson, Anila Thomas, Nathan Moses, Suzanne Ketter, Ben Hoogewerf, Stephanie Amavisca, Chad Mertz, Sam Myers, Justin Sutton, Christian Morales. Not Pictured: Brad Wooden, Trent Wiens, Nathan O'Quinn, Erica Smith, Kevin Hess, Jessica Robinson



# Lewis University

Back Row (l-r): Matt Pall, Anthony Lalor, Jake Ludtke, Jeff Stork, Ben Popp, Brian McHugh, James Vandeventer, Andrew Bianecki, Aaron Brown, Erik Rasmussen. Middle Row: George Chiampas, Casey Dyduch, Chris Nocchi, Cody Marks, Jeff Leo, Steven Molenstra, Nirav Patel, Robert Beckmann. Front Row: Jared Hunt (coach), Tiffinay Bilski (coach), Al Szoldatits (advisor), Megan Zahos (coach), Rob Delaney (coach).



# Liberty University

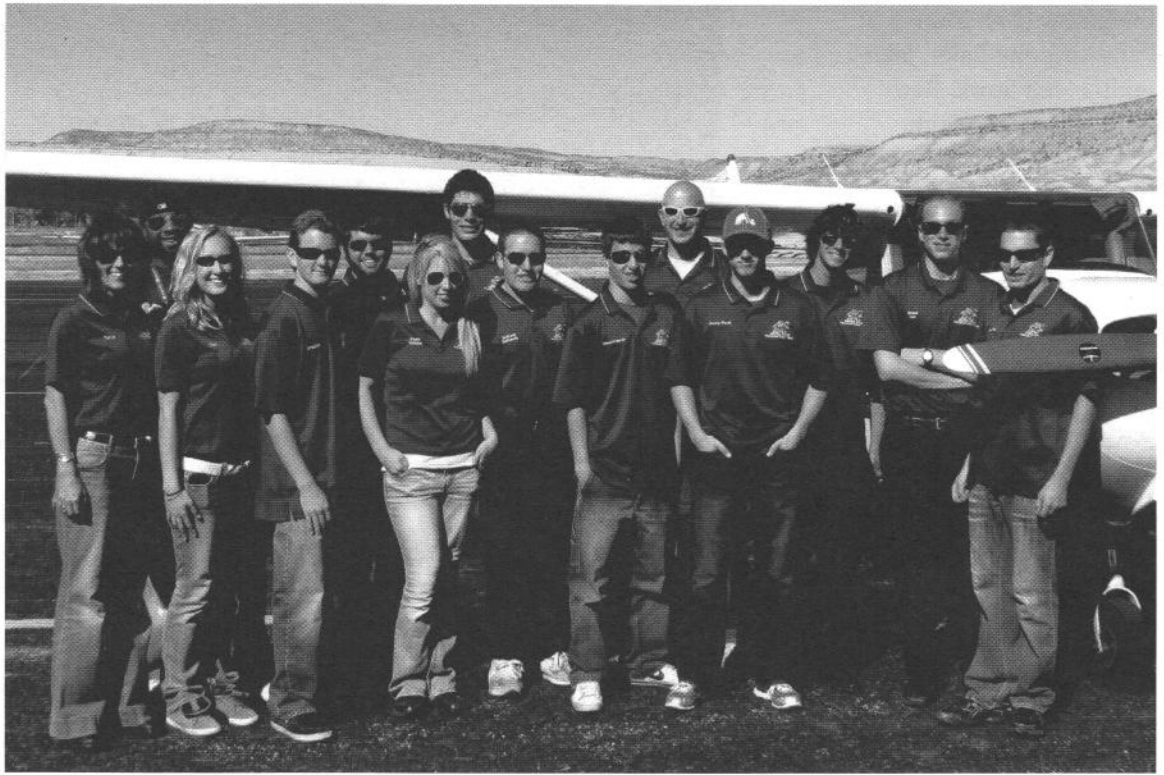


Back Row (l-r): John Marselus (advisor), James Curry, Eric Bell, Jeff Schlaudt, Nathan Richard, Andrew Annable, Melanie Evans, Charity Holland, Warren Mays, Zach Floto, Kevin Lang (assistant coach). Front Row: Hagen Lee, Jeremy Lee, Matt Sylvester, Sam Poff, Jessica Dyer, Eric Botello, Nathan Johnson, Lance Welch (coach)

# Metro State College of Denver

Pictured (l-r): Tanya Gatlin (advisor), William Futrell, Samantha Sizemore, Braden Hicks, Ryan Gibbs, Kayla Graham, Nicholas Marchese, Anthony DeFranco (captain), Vincent Martis, Brett Kohl, Tommy Staudt, Joshua Falgoust (co-captain), Shaun Lee, Zach Pegg (coach).

Not pictured: Mitchell Ambrosich, Isaac Anderson, Ryan Arndt, Davis Caldwell, Scott Cromer, Dylan Heberlein, Lisa Jones, Cody Leet, Rob Mertes, Jacob O'Shea, Damien Rockley, Anthony Vargas.



# Minnesota State University – Mankato

Pictured (l-r): Kelly Rixon, Kyle Jacobsen (captain), Austin Jacobsen, Aaron Barthol, Trevor Nielsen, Zac Lewis, Ryan Beardmore, Keith Devine (coach), Nick Singletary, Derek Shouts.

Not Pictured: Ethan Loftus, Patrick Kooima, Lane Dulon.



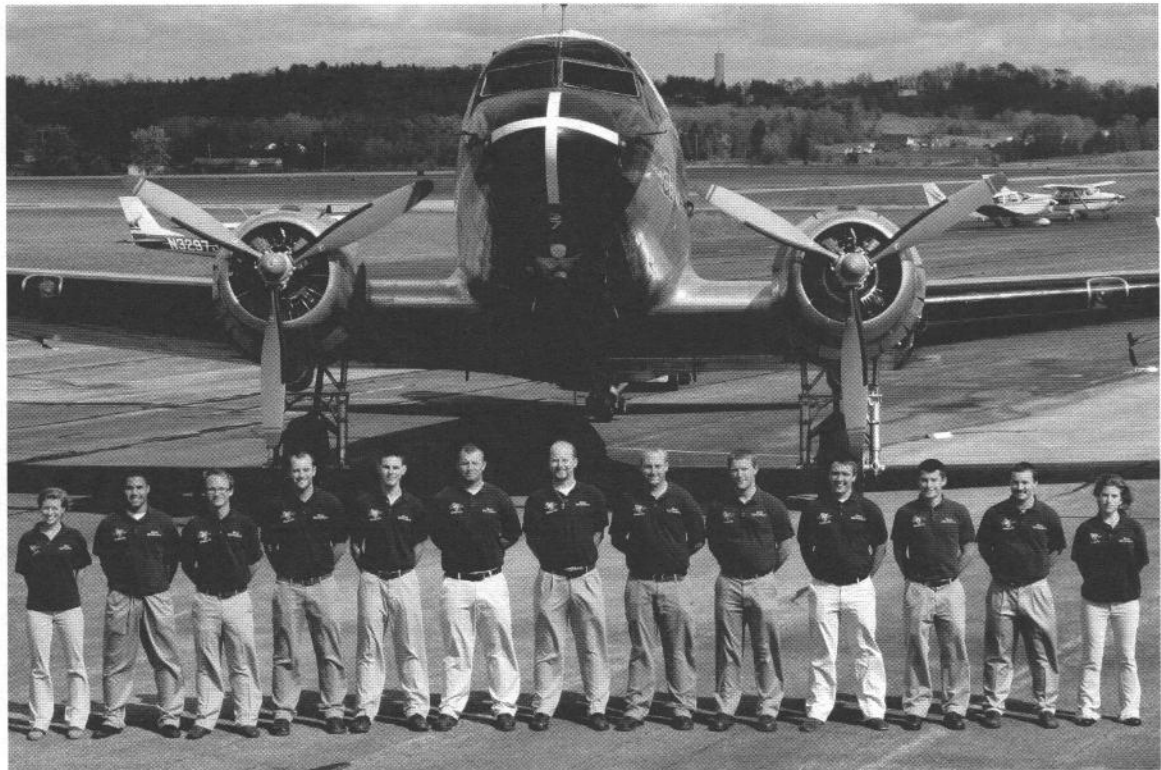


# Mt. San Antonio College



## Ohio University

Pictured (l-r): Jessica Belzer, Malcom Pullom, Sam Trost, Jeff Guynes (captain), Grant Rhue, Travis Fisher, George Armann (coach), Jordan Bidwell, Ben Brierly, Dylan Ewing, JD Quint, Chris Gatz, and Kelly McCoy. Not Pictured: Seth Winegardner, Tyler Scagel



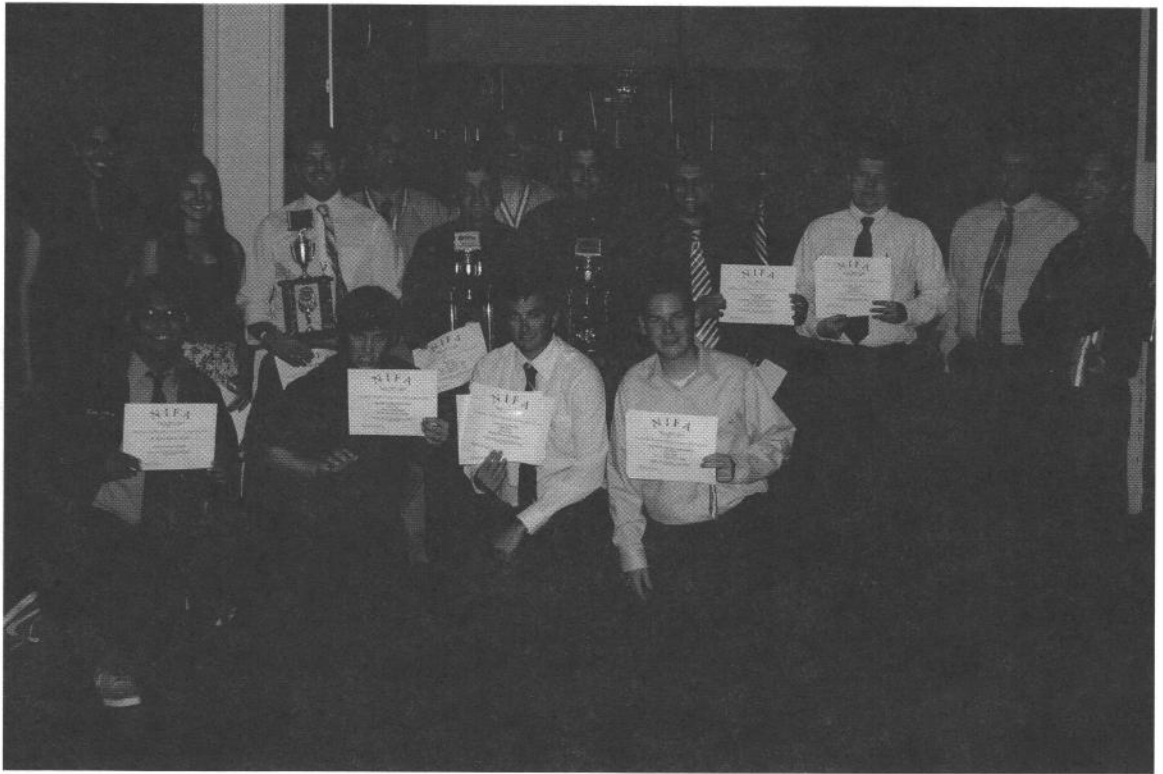
# Oklahoma State University

Pictured (l-r): Max Ringo, Michael Parisi, Jared Jacobs (team captain), Taylor Wilson, Hannah Schlesinger, Jay Maldonado, Jake Akin, Ryan Lawler, Ben Wilson. Not pictured: Steven Roberts (advisor), Kelsey Connelly, Sam Denyer, Erik Heng, Benton Painter, Alec Gentry.



# Rocky Mountain College

Back Row (l-r): Jason Tobin, James Campbell. Middle Row: Alicia Herron, Kim Cordova, Kyle Irving, Bo Grandy, Victor Vega, Chris Farmer, Marc Halderman, Riley Boyd, Jacob Keirleber (coach), Mike Damrow. Front Row: Erik Sahagun, Seth Livengood, Zach Witt, Tyler Reed.



# San Diego Christian College



Pictured (l-r): John Crotts, Dylan Jones, Kyle Mayhugh (captain), Elsbeth Ryniec, Rio Jasso, Jenna Sims, Stephen Henry, Roberto Aldama, Mathew Belden (coach), Laura-Beth Gathman, Sean Conlan, Mike Visnovsky, Paul Martin, Will Lowery, Aaron Giannetto, Kayla Harder, Jackson Judge, Ezechel Martis, Alex Closs, Chad Coyle, Bryanna Raue, David Quick, Kevin Brandt.

# Southeastern Oklahoma State University

Back Row (l-r): Jordan Powell (captain), Robert Jacobs (captain), Ping Cheng, Alex Bouqaurdez, Zac Morgan, Nikola Topalovic, Nathan Alcantara. Front Row: Kyle Thomas (advisor), Shane Welsch, Alec Maloy, Mike O'Dea, Jon Cobb, Austin McCann (captain).



# Southern Illinois University



Back Row (l-r): Nate Lincoln (coach), Kyle Neuman (coach), Bob Hutchinson, Scott Blair, Kevin Krongos (coach), Bryan Harrison (coach), Jeff Jaynes (coach), Kim Carter (coach). Middle Row: Ryan Veldman, Brandon Hurley, Josh Sager, Taylor Breum, Sam Oas, Justin Lopez, Dan Harrington (captain), Stephanie Armstrong. Front Row: Josh Mech, Evan Krueger, Dane Fearneyhough, Courtney Copping, John Galante, Kyle Hayes, Dan McMahon.

# The Ohio State University

Pictured (l-r): Ben Gaddy, Anthony Pentz, Nate Lynch, Richard Ward (coach), Alex Mulac, Justin Abrams, John Ginley, Bernie Eddy (captain), Jennifer Logsdon (captain). Not pictured: Josh Fisher, Ryan Terebesi.



# United States Air Force Academy



Back Row (l-r): Gidassi, Boyce, Cook, Wilson, Hainline, Kouwe, Harlow, McCartney, Adams, Nelson, Heflin. Front Row: Gibson, Mayclin, Spalla, Morell, Barina, Johnston, Attilio, Pichkur, Brandt, Barbazon, Weed.

# University of Dubuque

Pictured (l-r): Jessica Wagner, Kyle Voltz, Connor Monson, Jeremiah Ziebert, Ching Kuan Su, Colin Waldorf, Brian LaPage, Brent Missel, CJ Barbato, Jacob McGrane. Not pictured: Ryan Mattingly, Brett Hanson, Derek Schumacher, Alex Hoye, Emma Bridgett, Blade McQuiggin, Glenn Wear (coach), Mike Glynn (advisor)



# University of Illinois

Back Row (l-r): Christine Wintczak (coach), Joe McElwee (coach), Matt Paarlberg, Jeff Beck (coach), Michael McGarry, Nick Kazanjian, Dan Nusbaum (coach), Chris Royer, Ryan Yochum, Jimmy Libuszowski. Front row: Kevin Miller, Matt Niermann, Howard Pae, Erin Tilev (coach,) Karyn Wojcik, Phil Pickar. Not pictured: Oscar Santoyo, Julia Hamlin.



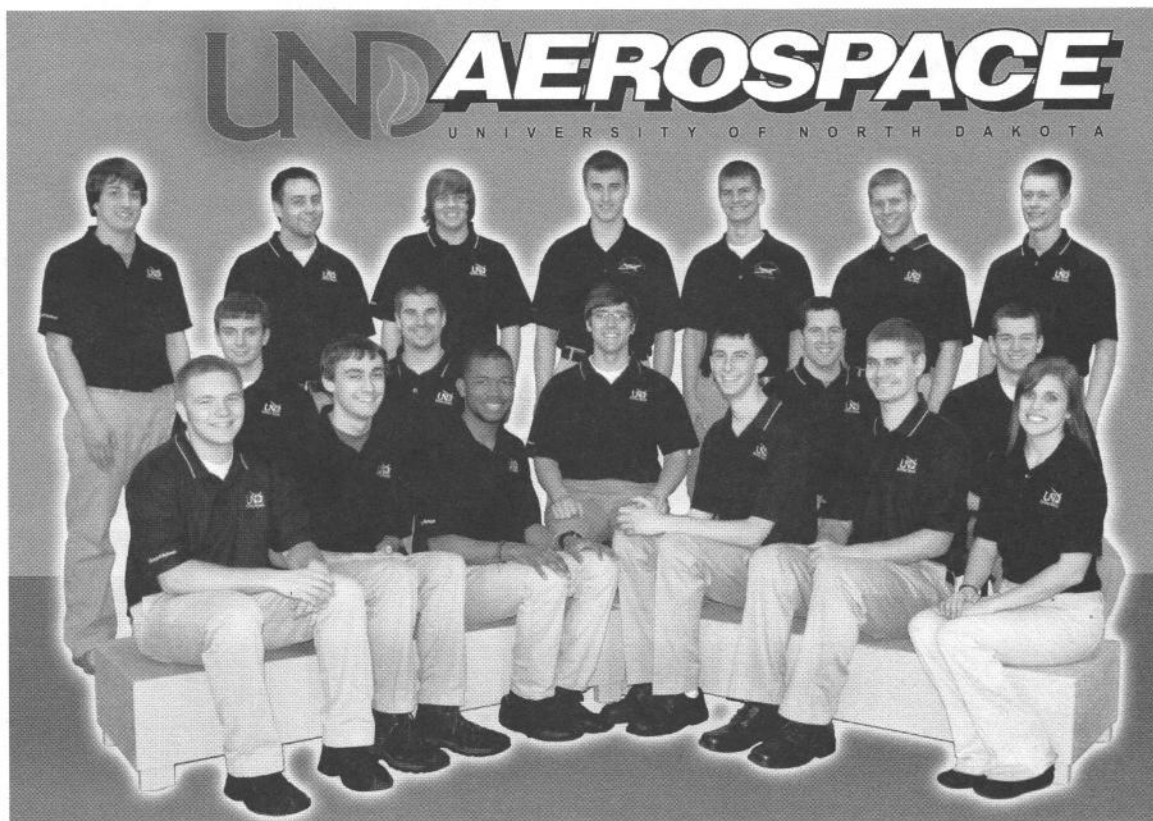
# University of Nebraska – Omaha



Back Row (l-r): Scott Vlasek (advisor), Ted Manos, Travis Huetter, Deanna Stoddard, Mallory Huntimer, Dale Butler, Tyler Wilmoth. Front Row: Colby Ranslem, Zach Ossino, Tyler Klingemann (co-captain), Austin Phillips (co-captain), Taylor Smith, Blake Zessin. Not Pictured: Jeremy Martin, James Slabaugh (coach).

# University of North Dakota

Front Row (l-r): Travis Wellik, Jacob Alvey, Brian Lee, Scott Meyer, Chad Wilson, Lauren Peterson. Middle Row: David Edmonds (co-captain), Paul Hering, Tyler VanHeel, Matthew McGrath (co-captain), Christian Mohan. Back Row (l-r): Paul Valenstein, Jacob Lange, Jack Foley, Ross Oleck, Jacob Smith, Kevin Kelm, Josh Garner.



# Western Michigan University

Back Row (l-r) Nate McCune, Justin Guth, Joe Batchelder, Reto Smith, Ramon Ramirez, Craig Lamouria, Randall Walliser, Zoltan Chien-Szegedy, Ryan Seiler (coach). Front Row: Chris Reichert, Kyle Mallory, Alex Bych, Ben Hastings, Andrew Seguin, Kaitlin Klingler, Takuya Kutsuzawa, Josh Lynch



THANKS JUDGES...  
YOU  
ARE THE  
GREATEST!



For volunteering one week  
of your time and spending an average of \$965.28  
judging at SAFECON  
to benefit the next generation  
of aviation professionals... We thank you!





These schools also earned invitations to compete at SAFECON 2012:

Auburn University



DELTA STATE  
UNIVERSITY 

Delta State University

Hampton University



HAMPTON  
UNIVERSITY

THE STANDARD OF EXCELLENCE



Schenectady County Community College

**AMERIFLIGHT**



[www.ameriflight.com](http://www.ameriflight.com)

CAREER TAKE-OFF CHECKLIST

MULTI-ENGINE TIME.....  
TURBINE PIC.....  
NATIONWIDE DOMICILES.....  
COMPANY STABILITY.....  
OPPORTUNITIES.....  
EXPERIENCE.....

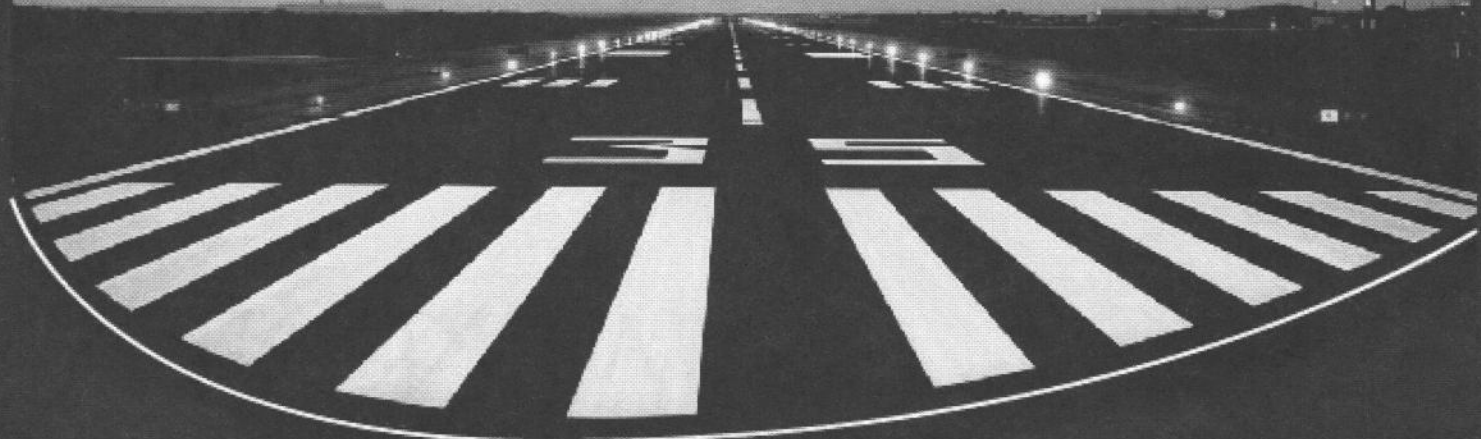
CHECK  
CHECK  
CHECK  
44 YEARS  
ENDLESS  
PRICELESS

CLIMB

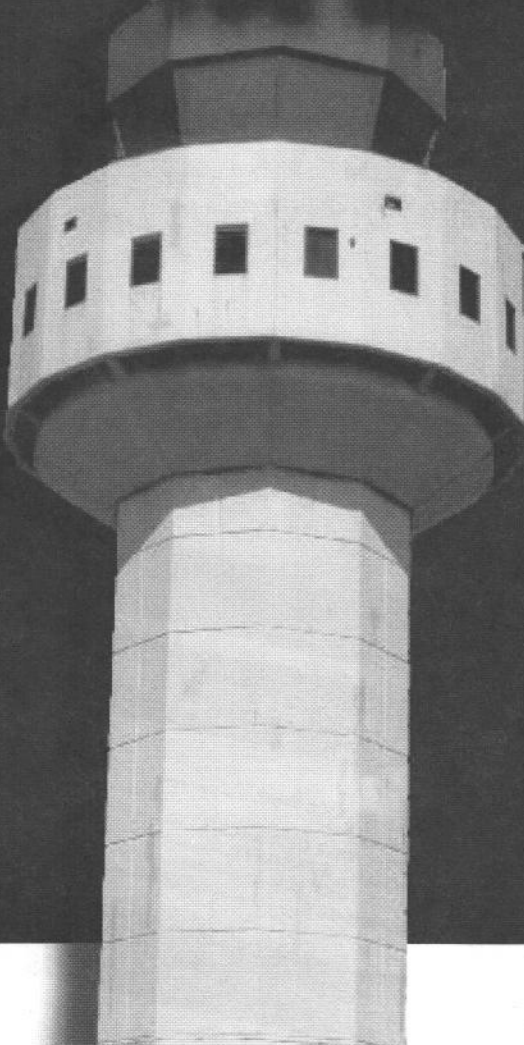
1700



Salina Municipal  
**SLN Airport**



**"You are Cleared to Land"**



**Welcome students!**

**We're proud to sponsor**

**SAFECON  
2012**

The Kansas state motto is Latin for “to the stars through difficulties,” so it’s no surprise that a military decision that could have had a significant negative impact on Salina’s economy has created opportunities bigger than the city imagined nearly half a century ago.

Construction of the Salina Municipal Airport began in May 1942 during World War II. It was known as Smoky Hill Army Airfield. Seven years and one name change later, the Department of Defense deactivated Smoky Hill Air Force Base in 1949, only to reopen it as a prestigious Strategic Air Command Base in 1951. In 1957 the base was renamed to honor Col. David C. Schilling, WWII fighter pilot and native Kansan. During its 23-year history, the base housed B-17’s, B-29’s, tanker planes, B-47 jet bombers, Atlas F Missiles, B-52’s, and KC-135’s.

The DOD closed Schilling Air Force Base in 1965 and the Salina Airport Authority was created to convert the military base into an airport-education-industry complex.

Hank Neely and Thomas Creech, engineering professors at Kansas State University in Manhattan, seized the opportunity to create a new school - Schilling Institute. Neely and Creech flipped a coin to see who would run the school. Neely lost and became the first president. Creech got his turn about a decade later.

In the beginning, the school offered two-year programs in science and engineering technology. Many of the students were veterans returning from Vietnam wanting to use the GI Bill. Aviation wasn’t added to the curriculum until the early 80’s.

In 1991, the school, then known as Kansas College of Technology, merged with Kansas State University, reflecting the original intentions of the school’s founders.



# ad astra per aspera

This second campus was made the ninth college in the K-State system and was called the College of Technology and Aviation, to reflect its two main academic departments at the time.

Since the merger, enrollment has continued to increase and the number of full time traditional college students has grown to represent a significant majority of the student body.

Now called Kansas State University Salina, the campus still houses the College of Technology and Aviation and all of its degree programs, and has added bachelor’s degree programs from other academic colleges as well as a professional master’s degree.

One of K-State Salina’s newest programs is the unmanned aircraft systems degree. Students in aviation and engineering programs participate in unique training and research opportunities.

## As far as the eye can see

Neither K-State Salina nor the SAA is in want of land.

Campus is located on 149 acres and the SAA oversees nearly 3,000 acres of land and numerous buildings.

The Salina Municipal Airport and Airport Industrial Center is home to 80 businesses and operations including SeaPort Airlines, America Jet, Flower Aviation, Kansas Army National Guard Aviation Support Facility, Kansas Highway Patrol Aviation, and the corporate flight departments for Blue Beacon International, Geoprobe Systems, Pepsi Cola-Salina, Plains Environmental, Premier Pneumatics, Inc., and Bradley Trucking Co.

The Salina Municipal Airport services the corporate, business, private aviation and flight training needs of industry, business and individuals in the area.

Schwan’s Global Supply Chain, Inc., also sits on former base property. Tony’s Pizza, the world’s largest frozen pizza plant, is located between the K-State campus and the airport terminal.

## America’s Fuel Stop

The Airports two FBOs annually deliver almost 4 million gallons of fuel to over 7,000 business jets and 5,000 government and military aircraft, earning KSLN recognition as “America’s Fuel Stop.” The air traffic control tower is busy during the year with aircraft operations exceeding 80,000.

***The students of NIFA  
would like to extend a very  
special "THANKS!" to the following  
Ninety-Nines who have made  
donations to NIFA during the  
past competition year!***

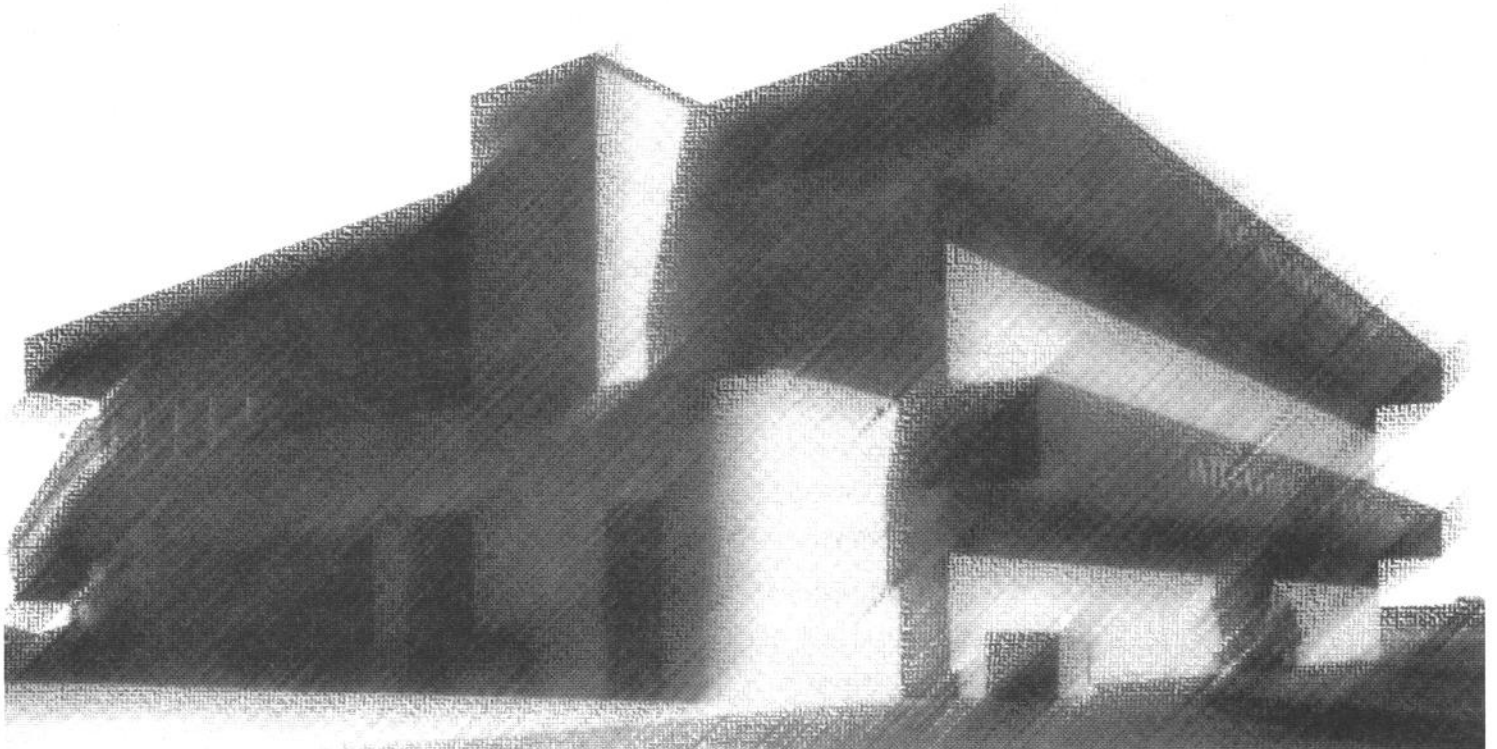
**SECTIONS:**

**CHAPTERS:**

**INDIVIDUALS:**

Golden Triangle  
Houston  
Lake Tahoe  
Michigan  
Three Rivers

Diane Bartels  
Carolyn Carpp  
Thelma Cull  
Lois Gronau  
Jody McCarrell



*The Ninety-Nines Headquarters Building  
Will Rogers World Airport - Oklahoma City, Oklahoma*

# Thank you!

SAFECON 2012 would not have been possible if it weren't for our sponsors:

## Frasca International, Inc. The Cessna Aircraft Company

Aviation Supplies & Academics	Hemphill, Weesner & Viner families
Air Line Pilots Association	Jet Aviation Holdings, Inc.
Airbus North America	National Association of Flight Instructors
Aircraft Owners & Pilots Association	National Business Aviation Association
American Airlines	Phoenix Aviation Managers, Inc.
American Eagle Airlines	QBE North America
Cirrus Aircraft	SkyWest Airlines
Delta Air Lines	Southwest Airlines
Diamond Aircraft	Sporty's Pilot Shop
General Aviation Manufacturers Association	Talon Systems
Jeppesen	The Ninety Nines, Inc.
Ameriflight	
Atlantic Southeast Airlines	
Bose	
DTC DUAT	
Florida Institute of Technology	
Paradigm Shift Solutions	
Salina Area Chamber of Commerce	
TransPac Aviation Academy	
National Gay Pilots Association	
Trade-A-Plane	
Enterprise Rent-A-Car	
Little Caesars Pizza	
McDonalds	
Applebee's	
Eisenhower Presidential Library and Museum	
Red Lobster	
Spangles	
Sonic Drive-In	
Tucson's Steakhouse	

# NIFA Member Schools

## 2011-2012 Competition Year

### Region I - [ CO, MT, NM, UT, WY ]

Colorado Northwestern Comm. College  
 Metropolitan State College of Denver  
 Rocky Mountain College  
 United States Air Force Academy  
 Utah State University  
 Utah Valley University  
 Westminster College

### Region II - [ AZ, CA, HI, NV ]

Embry Riddle Aeronautical Univ. Prescott  
 Mount San Antonio College  
 Orange Coast Community College  
 San Diego Christian College  
 San Jose State University

### Region III - [ MI, OH, PA, and WV ]

Kent State University  
 Ohio University  
 The Ohio State University  
 University of Cincinnati  
 Western Michigan University

### Region IV - [ AR, LA, MS, and TX ]

Central Texas College  
 Delta State University  
 Hinds Community College  
 LeTourneau University  
 Louisiana Tech University  
 Texas State Technical College  
 University of Louisiana - Monroe

### Region V - [ IA, MN, ND, SD, WI ]

Iowa State University  
 Minnesota State University - Mankato  
 St. Cloud State University  
 University of Dubuque  
 University of Minnesota - Crookston  
 University of North Dakota

### Region VI - [ KS, MO, NE, OK ]

Kansas State University at Salina  
 Oklahoma State University  
 Spartan College of Aeronautics  
 St. Louis University - Parks College  
 Southeastern Oklahoma State University  
 University of Central Missouri  
 University of Nebraska - Omaha  
 University of Oklahoma

### Region VII - [ CT, DE, ME, MA, NH, NJ, NY, RI, VT ]

Bridgewater State University  
 Delaware State University  
 Dowling College  
 Rensselaer Polytechnic Institute  
 Schenectady County Community College  
 United States Military Academy

### Region VIII - [ IL, IN, KY, TN ]

Indiana State University  
 Lewis University  
 Middle Tennessee State University  
 Purdue University  
 Southern Illinois University  
 University of Illinois at Urbana

### Region IX - [ AL, FL, GA ]

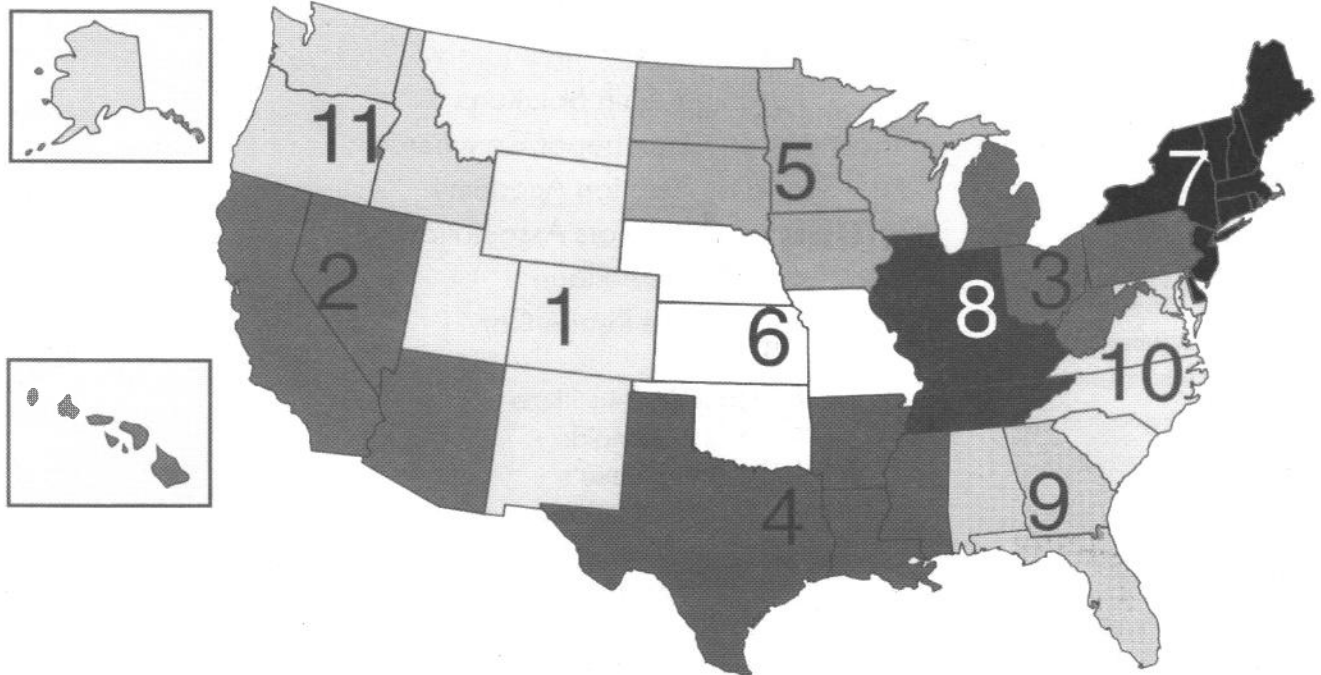
Auburn University  
 Embry Riddle Aeronautical Univ. Daytona  
 Florida Institute of Technology  
 Florida Memorial University  
 Jacksonville University  
 Lynn University  
 Miami Dade College

### Region X - [ DC, MD, NC, SC, VA ]

Averett University  
 Elizabeth City State University  
 Caldwell Community College & Tech. Inst  
 Guilford Community & Technical College  
 Hampton University  
 Liberty University

### Region XI - [ AK, ID, OR, and WA ]

(no member schools)



**TO ALL SAFECON CONTESTANTS,  
I REGRETFULLY WANT YOU TO KNOW  
THAT I WILL NOT BE WITH YOU THIS  
YEAR AT SALINA. PLEASE DO YOUR  
VERY BEST IN EACH COMPETITION,  
BE SAFE, AND MOST OF ALL, HAVE FUN!**



# Maximize Training with Minimum Downtime



**Innovation,  
Technology &  
Training Solutions  
From a Company  
You Know**

## Looking for a flight simulator to meet your training requirements?

A Frasca CRJ Flight Training Device has the required capabilities and more, with maximum reliability, minimum downtime, and unfailing support. In fact, Frasca has built and delivered several FAA Level 5 and 6 CRJ FTDs in addition to Level C devices for many other aircraft types.

Your long term success requires long term support and Frasca International is the most devoted partner you'll find. This legendary commitment to customers has helped Frasca become the most trusted name among collegiate aviation programs worldwide. Look to the company trusted by flight training organizations worldwide. Speak with a Frasca representative and find your simulation solution today.

To learn more about our product line,  
visit [www.frasca.com](http://www.frasca.com)  
Ph: 217-344-9200  
Fax: 217: 344-9207  
[info@frasca.com](mailto:info@frasca.com)



[www.frasca.com](http://www.frasca.com)